



SOCIETAT CORAL
EL MICALET

FONS MUSICALS PER A ORQUESTRA DE POLS I PUA

84 SOL DE ESPAÑA

SELECCIÓN
ANDRÉS BORDANOVA



BANDURRIA 1ª

SOL DE ESPAÑA

Dedicada a mi amigo José García (Pepín) 1988

SELECCIÓN



SOCIETAT CORAL
EL MICALET

A. BORDANOVA

ALLEGRO MOSSO (♩ = 150)

mf *p*

9

17 *cresc.*

26 *ff*

31 *poco rall* *f a tempo*

38 *mf*

47

54

61 *poco rall* *pp cantabile* **3** Andante (♩ = 60)

70

78

85 *pesante*

92 **4** Allegro (♩ = 130) *rall*

SOL DE ESPAÑA-Bandurria 1ª



2

101 *a tempo* *rall* *a tempo* (5)

114 *ppp* *mf* **Primo tempo** (♩ = 150) (6)

128 *p*

136 (7)

145

153 *poco rall* *a tempo* (8)

159 *rall* *ff* *a tempo*

168 *pp* *rall* *a tempo* *ten* (9)

184 *menos* *a tempo* *pp* *cresc.* (10) 2 2

196

(11) **Andante** (♩ = 60) *rall molto* *fff* *a tempo*

206

217

226 *pesante* *poco rall* *pesante* *ff* *fff* (12)

SOL DE ESPAÑA



BANDURRIA 2ª

SELECCIÓN

Dedicada a mi amigo José García (Pepín) 1988

A. BORDANOVA

ALLEGRO MOSSO (♩ = 150)

p

12

24 *cresc.* *ff* *p*

34 *poco rall* *f a tempo* *p*

44

57 *mf* *poco rall* *pp*

65

73

82 *pesante* *p*

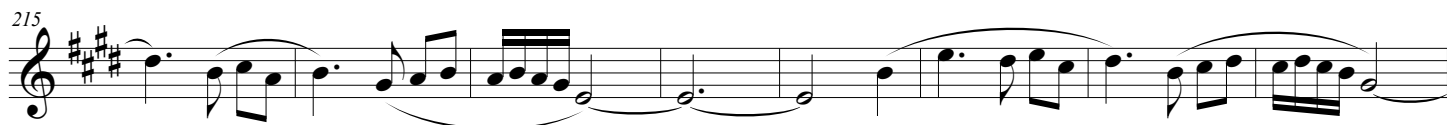
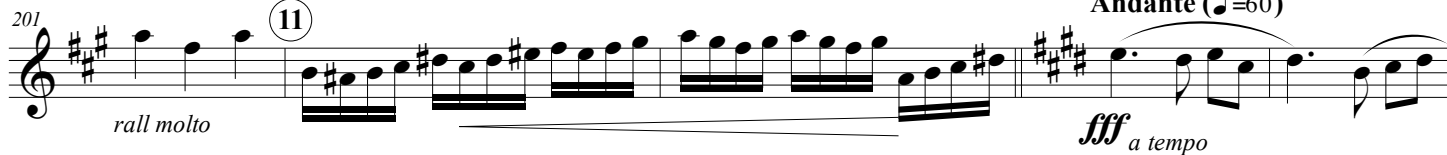
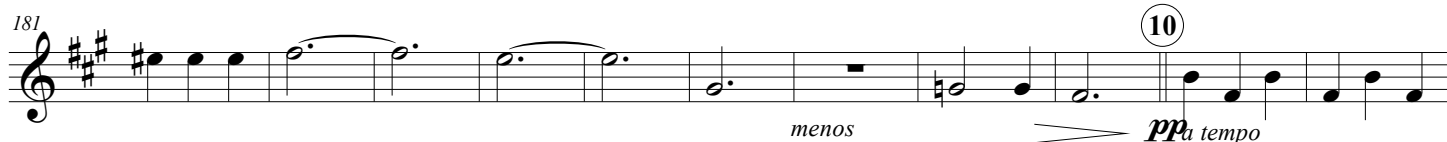
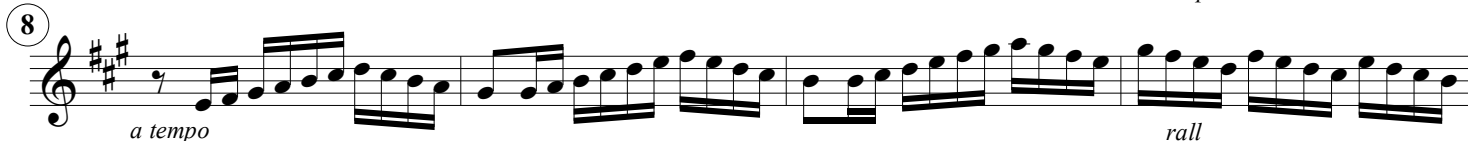
91 **4** **Allegro** (♩ = 130) *rall*

101 *a tempo* *rall*

5 *a tempo* *ppp*

2 (6) **Primo tempo** (♩ = 150)

SOL DE ESPAÑA-Bandurria 2ª



SOL DE ESPAÑA

SELECCIÓN

Dedicada a mi amigo José García (Pepín) 1988



ALLEGRO MOSSO (♩=150)

A. BORDANOVA

Musical notation for the first staff (measures 1-10). Dynamics: *p*.

Musical notation for the second staff (measures 11-19). Dynamics: *p*.

Musical notation for the third staff (measures 20-30). Includes circled number 1. Dynamics: *cresc.* leading to *ff*.

Musical notation for the fourth staff (measures 31-40). Dynamics: *p*, *poco rall*, *f a tempo*.

Musical notation for the fifth staff (measures 41-50). Includes circled number 2. Dynamics: *p*.

Musical notation for the sixth staff (measures 51-60). Dynamics: *mf*, *poco rall*.

3 Andante (♩=60)

Musical notation for the seventh staff (measures 61-73). Dynamics: *pp*, *ff*.

Musical notation for the eighth staff (measures 74-83). Dynamics: *pp*.

Musical notation for the ninth staff (measures 84-101). Dynamics: *pesante*, *p*.

4 Allegro (♩=130)

Musical notation for the tenth staff (measures 102-109). Includes circled number 4. Dynamics: *rall*, *a tempo*.

Musical notation for the eleventh staff (measures 110-117). Dynamics: *rall*.

2

SOL DE ESPAÑA-Laúd

⑤ *a tempo*

⑥ *Primo tempo* (♩ = 150)

ppp sfz p p

⑦ *p*

⑧ *poco rall a tempo rall*

⑨ *a tempo ff*

⑩ *pp rall ten a tempo*

⑪ *menos > ma tempo*

⑫ *cresc. rall molto*

⑬ *Andante* (♩ = 60)

⑭ *pesante poco rall*

⑮ *pesante fff fff*

⑯ *pesante fff fff*

GUITARRA

SOL DE ESPAÑA

SELECCIÓN

Dedicada a mi amigo José García (Pepín) 1988



A. BORDANOVA

ALLEGRO MOSSO (♩ = 150)

12 *mf* *p*

31 *cresc.* *ff* *a tempo* *f*

41 *poco rall* *f*

50

59 *poco rall* *mf*

3 *Andante* (♩ = 60) *mf*

76

85 *pesante*

4 *Allegro* (♩ = 130) *rall* *a tempo*

102 *rall* *a tempo*

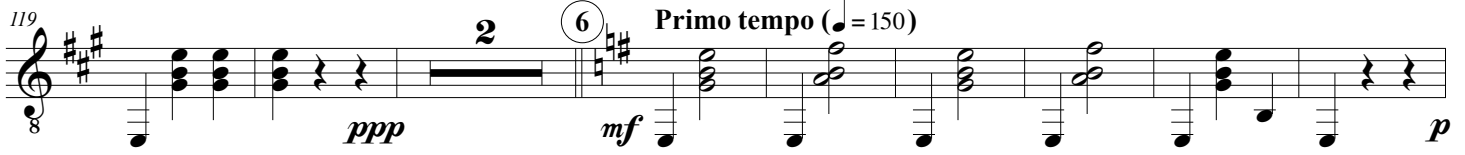
111



119

2 (6) **Primo tempo** (♩=150)

ppp *mf* *p*



129



(7)



153

(8) 2

poco rall *a tempo* *rall* *ff* *a tempo*



163

3 (9)

pp



173

ten *rall* *a tempo*



181

3 (10) 2 3

menos *pp*



196

(11)

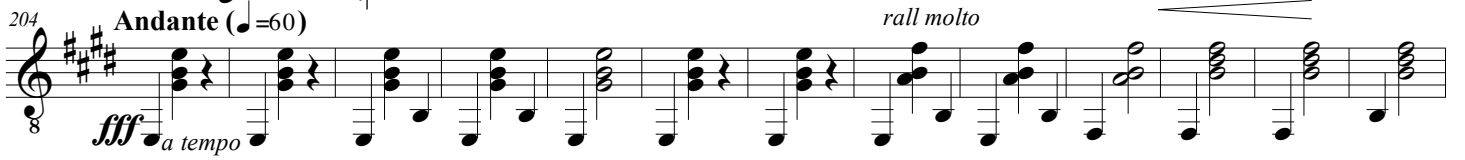
pp



204

Andante (♩=60)

fff *a tempo* *rall molto*



217

pesante



229

(12)

poco rall *pesante* *ff* *fff*

